
Memorandum

To: Mayor & Members of Council
From: Monica Irelan, City Manager
Subject: General Information
Date: September 26, 2014

1. Calendar
2. No Meetings this Week
3. Fall Seasonal Cleanup is next week (Sept. 29th – Oct. 3rd), enclosed is the Press Release and Pickup Schedule
4. Public Power Connections/Fall Edition 2014
5. OML Legislative Bulletin/September 25, 2014
6. AMP Update/September 26, 2014

MI:rd
Records Retention
CM-11 - 2 Years

September 2014							October 2014							November 2014						
S	M	T	W	T	F	S	S	M	T	W	T	F	S	S	M	T	W	T	F	S
	1	2	3	4	5	6			1	2	3	4							1	
7	8	9	10	11	12	13	5	6	7	8	9	10	11	2	3	4	5	6	7	8
14	15	16	17	18	19	20	12	13	14	15	16	17	18	9	10	11	12	13	14	15
21	22	23	24	25	26	27	19	20	21	22	23	24	25	16	17	18	19	20	21	22
28	29	30					26	27	28	29	30	31		23	24	25	26	27	28	29
														30						

 Calendar

Sunday	Monday	Tuesday	Wednesday	Thursday	Friday	Saturday
28	29 5th Monday/No Scheduled Meeting Seasonal Cleanup - Week	30 Seasonal Cleanup - Week	1 Seasonal Cleanup - Week	2 Seasonal Cleanup - Week	3 Seasonal Cleanup - Week	4
5	6	7	8	9	10	11
12	13	14	15	16	17	18
19	20	21	22	23	24	25
26	27	28	29	30	31	1

City of NAPOLEON, Ohio

Operations Department

1775 Industrial Dr., P.O. Box 151, Napoleon, OH 43545

Phone: 419/599-1891 Fax: 419/592-4379



Operations Superintendent
Jeffrey H. Rathge

Water Distribution Foreman
Brian Okuley

Streets/Sewer Foreman
Roger Eis

Refuse/Recycling Foreman
Perry Hunter

Head Mechanic
Tony Kuhlman

PRESS RELEASE

2014 FALL SEASONAL CLEAN UP

The annual fall seasonal clean up, for those who receive regular City refuse service, will be the week of September 29th – October 3rd, 2014.

A list of guidelines and acceptable materials, along with exact streets and dates, will be released to all local media the week of September 22nd, 2014. The information is also available on the City of Napoleon's website at www.napoleonohio.com.

Per Ordinance # 088-08 the City of Napoleon has amended the Seasonal Clean Up Guidelines as follows:

"Material or other items placed for pick up shall be at the curb no more than five (5) days in advance of the subscriber's scheduled seasonal pick up day. Items placed at the curb earlier than five (5) days in advance of the scheduled pick up day will be treated by the city as a 'special pick up' with charges being assessed to the subscriber or person responsible for placement"

Any questions regarding this matter should be directed to the Operations Department at 419- 599-1891.

SCHEDULE FOR FALL SEASONAL PICK UP *September 29 through October 3, 2014*

The following General Rules and Regulations shall be effective for the September 29 – October 3, 2014 Fall Seasonal Clean Up:

1. MATERIALS MUST BE IN CONTAINERS AND KEPT DRY.
2. NO CONTAINERS LARGER THAN THIRTY (30) GALLONS, OR WEIGHING MORE THAN 50 LBS.
3. ALL UNMARKED CONTAINERS WILL BE CONSIDERED AS LEFT FOR DISPOSAL.
4. ALL MATERIAL MUST BE COVERED DURING RAIN OR STRONG WIND TO AVOID WETNESS AND BLOWING.
5. ALL BUILDING MATERIAL SHALL NOT BE LARGER THAN FOUR FEET (4') IN LENGTH AND THREE FEET (3') WIDE . ALL LOOSE ITEMS MUST BE BOXED OR BAGGED. THE WEIGHT OF SUCH CONTAINERS SHALL NOT EXCEED 50 LBS. CARPETING OR PADDING SHALL BE IN ROLLS NO WIDER THAN FOUR FEET (4') AND TIED WITH A CORD.
6. NO MATERIAL SHALL CONTAIN NAILS THAT HAVE NOT BEEN BENT OVER.
7. IT IS PROHIBITED TO HAVE ROCKS, BRICKS, CONCRETE BLOCKS OR PLASTER WEIGHING IN EXCESS OF 50 LBS.
8. IT IS PROHIBITED TO MIX REGULARLY SCHEDULED REFUSE WITH MATERIAL SCHEDULED FOR THIS PICK UP
9. IT IS PROHIBITED TO PLACE FOR PICKUP BRUSH, LIMBS, OR OTHER YARD WASTE MATERIAL.
10. IT IS PROHIBITED TO PLACE FOR PICK UP LIQUID WASTE, INCLUDING BUT NOT LIMITED TO: PAINT, HOUSEHOLD CHEMICALS, USED MOTOR OIL, ANTIFREEZE, AND TAR. HOUSEHOLD CHEMICAL CONTAINERS AND PESTICIDES MUST BE RINSED PRIOR TO PLACEMENT FOR PICKUP AND WHEN APPLICABLE, IN ACCORDANCE WITH PRODUCT LABELING INSTRUCTIONS (TRIPLE RINSE FOR PESTICIDES).
11. PAINT CANS OR TAR BUCKETS MUST HAVE THE LIDS REMOVED AND REMAINING PAINT OR TAR COMPLETELY DRY. PAINT WILL BE ACCEPTED IN THE FOLLOWING WAYS: (i) WOOD OR CARDBOARD MAY BE PAINTED TO USE UP THE REMAINING PAINT; OR, (ii) CAT LITTER OR FLOOR DRY MAY BE USED TO MAKE THE PAINT A THICK PASTE; THEREAFTER, SO LONG AS THE CONTAINER IS DRY, THE MATERIAL MAY BE INCLUDED FOR PICKUP.
12. ALL REFRIGERATORS AND/OR FREEZERS MUST HAVE THE DOORS REMOVED AND THE CONTENTS EMPTIED PRIOR TO PLACEMENT FOR PICKUP.
13. WHITEWARE SHALL BE TAGGED IN ACCORDANCE WITH APPROVED TAGS AND AMOUNTS AS ESTABLISHED BY THE CITY. TAGS FOR REFRIGERATORS AND/OR FREEZERS MUST BE ON THE UNIT AND NOT ON THE REMOVED DOOR.
14. ANY ITEMS NOT PROPERLY TAGGED OR PLACED FOR PICKUP, IN A MANNER THAT APPEARS TO BE INTENDED FOR PICKUP, SHALL BE DEEMED AUTHORIZED BY PICKUP AND WILL BE TREATED BY THE CITY AS A "SPECIAL PICKUP" WITH CHARGES BEING ACCORDINGLY ASSESSED.
15. **MATERIAL OR OTHER ITEMS PLACED FOR PICK UP SHALL BE AT THE CURB NO MORE THAN FIVE (5) DAYS IN ADVANCE OF THE SUBSCRIBER'S SCHEDULED SEASONAL PICK UP DAY. ITEMS PLACED AT THE CURB EARLIER THAN FIVE (5) DAYS IN ADVANCE OF THE SCHEDULED PICK UP DAY WILL BE TREATED BY THE CITY AS A "SPECIAL PICKUP" WITH CHARGES BEING ASSESSED TO THE SUBSCRIBER OR PERSON RESPONSIBLE FOR PLACEMENT.**

The City shall require the use of City *Refuse Tags* to cover the disposal cost of the following items:

- | | |
|-------------------------|--------|
| 1. Whiteware with Freon | 5 tags |
| 2. Air Conditioner | 5 tags |
| 3. Passenger Car Tire | 1 tag |
| 4. Semi-Truck Tire | 4 tags |
| 5. Tractor Tire | 6 tags |

*The City of Napoleon, in cooperation with Zack's Recycling, will again accept used **computers, printers, and keyboards** as part of this year's "spring seasonal clean up". Please set the equipment out apart from your regular material. A separate truck, which picks up recyclable materials, will stop and collect the electronics for proper recycling. **Monitors are to be placed with regular pick up items.***

ALL RULES AND REGULATIONS, ALONG WITH ANY ACCESSED CHARGES, WILL BE ENFORCED. All materials are to be at the curb by 7:00 a.m. the morning of your pick up. Return trips will not be made for items set out late.

Any questions regarding the guidelines should be directed to the City of Napoleon Operations Department at 599-1891.

Monday, September 29, 2014

Arden Court
Avon Place
Becca Lane
Bordeaux Drive
Briarcliff Drive
Buckeye Lane
Capri Drive
Chesterfield Drive
Cripple Creek Court
Duquesne Drive
Erie Street
Garden Street
Glenwood Avenue (from Riverview to Washington)
Haley Avenue (from Riverview to Washington)
Hilltop Lane
Hurst Drive
Jahns Road
Joliette Drive
Lafayette Drive
Lemans Drive
Martha Lane
Neward Drive
Norton Avenue (from Washington to Park)
Orchard Lane
Orwig Lane
Park Court
Park Lane
Park Place
Park Street
Robinwood Avenue
Rohm Drive
Sedward Drive
Sheffield Avenue (from Riverview to Washington)
Strong Street
Sycamore Lane
Thershan Drive
Vincennes Drive
Vine Street
Wayne Park Drive
Webster Street (from Washington to Main)
Welsted Street
West Main Street
West Front Street
West Riverview Avenue
West Washington Street
Williamsburg Avenue

Tuesday, September 30, 2014

Bauman Place
Becklee Drive
Carey Street
Collingwood Drive
Depot Street
Derome Drive
Detroit Avenue
Dodd Street
East Riverview Avenue (from Scott to Enterprise)
East Clinton (from Perry to Riverview)
East Washington Street (from Monroe to Hobson)
Enterprise Avenue
Fair Street
Fillmore Street
Freedom Drive
Hobson Street (from Riverview to Oakwood)
Hudson Street
Independence Court
Independence Drive
Industrial Drive
Ken James Court
Kolbe Street
Lagrange Street (from Willard to Dodd)
Lakeview Drive
Lamar Lane
Maple Street
Monroe Street (from Fillmore to Riverview)
North Street
North Perry Street
Northcrest Circle
Northcrest Drive
Norwood Drive
Oakwood Avenue
Ohio Street (from Willard to Scott)
Old Creek Drive
Railroad Street
Reynolds Street
Rye Street
Scott Street
Shelby Street
Stevenson Street
Trail Drive
Union Street
Valleybrook Estates
Vocke Street
W. Clinton Street (from Scott to Perry)
Willard Street
Yeager Street

Wednesday, October 1, 2014

Bales Road
Briarheath Avenue
Broadmoor Avenue
Chelsea Avenue
Clairmont Avenue
Glenbrook Court
Glenwood Estates
Glenwood Avenue (from Washington to Harmony)
Haley Avenue (from Washington to Woodlawn)
Harmony Drive
High Street
Highland Avenue
Indiana Avenue
Kenilworth Avenue
Lagrange Street (from Indiana to Willard)
Leonard Street
Lumbard Street
Lynne Avenue
Melody Lane
Michigan Avenue
North Sheffield Avenue (from Washington to Clinton)
North Harmony Drive
Norton Avenue (from Washington to railroad tracks)
Oakdale Avenue
Ohio Street (from Glenwood to Willard)
Richmar Lane
Romain Avenue
Taylor Drive
Tyler Street
Webster Street (from Clinton to Washington)
West Clinton Street (from Scott to Sheffield)
Westchester Avenue
Westmont Avenue
Westmoreland Avenue
Westwood Avenue
Woodlawn Avenue
Woodlawn Court

Thursday, October 2, 2014

Appian Avenue
Bavarian Village
Beckham Street
Brownell Street
Cambridge Street
Cliff Street
Daggett Drive
East Washington Street (from Hobson to Waste Water Plant)
East Barnes Avenue
East Front Street
East Graceway Drive
East Main Street
East Maumee Avenue
Euclid Avenue
Fairview Drive
Fifth Street
First Street
Fourth Street
Hobson Street (from Riverview to Front)
Huddle Road
Jefferson Street
Last Street
Maumee Valley Mobile Home Park
Maumee Lane
Meekison Street
Monroe Street (from Riverview to Front)
Moorings Drive
Moser Drive
Oak Street
Oxford Street
Pontious Place
Raymond Street
Rohrs Street
Second Street
Short Street
South Perry Street
Spruce Street
Stout Street
Third Street
Walnut Street
Wayne Street
West Maumee Avenue
West Graceway Drive
West Barnes Avenue

Friday, October 3, 2014

Catch-up Day!!!

PUBLIC POWER CONNECTIONS

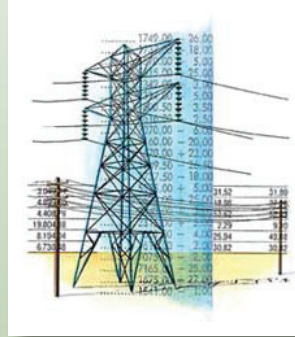
HOW CONSUMER DEMAND DRIVES THE PRICE OF POWER

Did you know weather and economy create consumer demand for energy?

There are three major factors that drive the price of power: consumer demand, generation prices, and environmental and regulatory issues. This article will focus on consumer demand. The time of day, day of week, weather and economy all affect usage – which in turn – creates consumer demand.

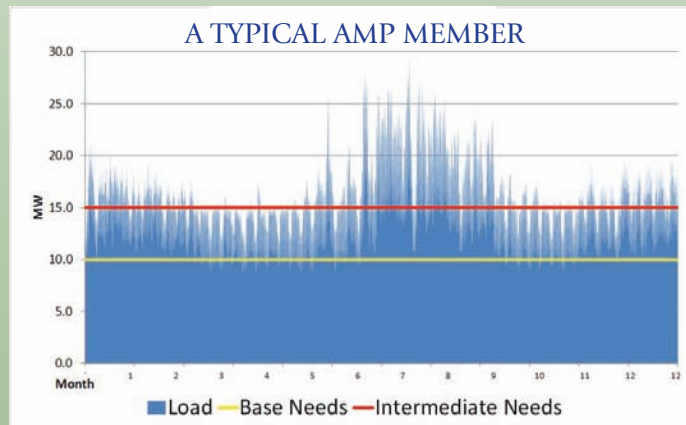
The industry uses the terms on-peak and off-peak to define usage. “Peak” is when the demand for electricity is at its maximum. A community generally uses more power in the daytime than in the evening, with higher loads on weekdays.

Demand is largely impacted by weather and the price of power is usually affected seasonally. In the summertime, when people are using their air conditioners frequently, bills will be higher. While some communities peak in the winter (those with mainly electric heat and a cool climate), most peak in the summer. As usage goes up, so does the amount of power that needs to be generated.



In general, the lowest load is when the outdoor average temperature is 60 degrees.

The economy also plays a factor in consumer demand. The biggest drivers of this are industrial power users. Communities with many industrial facilities in the area will see their loads more impacted by the economy than a community that is mostly residential. The economy also comes into play through the trickle-down effect.



When a community’s economy is better, the demand for load is usually higher (if people are doing well they tend to buy more electronics, which use more power).

If you find your electric bill is getting a bit high, try changing your daily routines to be more energy efficient. The best way to lower your electric bill is simply to use less power. Get in

the habit of turning/leaving things off and unplugging devices when they aren’t in use.

EFFICIENCY FOCUS

According to the U.S. Department of Energy, windows can account for 10 to 25 percent of your heating bill by letting heat out. Interested in upgrading your windows? Here are a few things to remember when looking to boost your window efficiency.

- Low-E coatings on the glass reflect heat inside your home and reflect the sun’s ultraviolet (UV) rays outside your home
- Multiple panes of glass increase insulation and help maximize energy efficiency
- Weather stripping reduces heating and cooling costs by sealing air leaks
- Keep in mind low U-values or U-factors when selecting windows as they have the highest insulating properties
- Casement and awning windows fasten more tightly against weather stripping than double-hung windows, which lets less air in and/or out



A WELL-DRESSED LINeworker PUTS SAFETY FIRST

Lineworkers' personal protective equipment helps keep them safe from head to toe while they're busy keeping the lights on.

HEAD: Hard hat and eye protection (includes glasses and face shields) are necessities. Hard hats resist penetration by sharp objects and lessen a blow to the head by distributing force over a bigger area.



TORSO: Lineworkers must wear long sleeves and adequate fire-resistant (self-extinguishing fireproof) clothing. When working out of a bucket truck, lineworkers wear a full body harness and shock absorbing lanyard. For climbing a power pole, a body belt is required and fall protection is recommended (soon to be required).

ARMS: Rubber gloves with leather protectors are placed over rubber sleeves, which cover the arms from shoulder to wrist. The rubber insulating gear protects against accidental contact with a live wire.

LEGS: Proper footwear is a must (steel-toed boots with steel arch reinforced). When climbing, lineworkers wear "climbers." These are made of metal, hook under the heel on boots, and have spikes (gaffs) to assist with climbing power poles.



HOW IT WORKS: CONTRACTING POWER

The process of contracting power is extremely complex. At its simplest definition, contracting power is buying electricity for some future period of time. It is the process of locking in a fixed amount of power for a specific price between a supplier and end user. These "blocks" of power come in many various shapes and terms such as hourly, daily, monthly, annually or multiple years. The benefit of buying power in advance is that it helps reduce the risk of fluctuating market prices.

As an example, if you had the ability to lock in the price of your gas for the next six months, you'd most likely estimate how much to purchase by looking back at how much you've

used in the past. Let's say you estimate 200 gallons of gas for this example. Now you'd contract with the gas station for a set price for 200 gallons of gas over the next six months. Your actual usage could be slightly more or less than 200 gallons within that time frame, but by having a fixed rate, you would have eliminated the risk of soaring gas prices in an unpredictable market.

When it comes to buying power, a municipality can forecast its future usage by examining its historical usage, econometrics and weather patterns. American Municipal Power, Inc. (AMP) has standard agreements established with many counterparties to supply power. Municipalities can purchase blocks of energy for a specific term and



price through AMP. Committing to a fixed price for blocks of energy allows communities to better budget and establish rates.

While energy is only one piece of overall power costs, locking in the energy costs helps reduce the risk of fluctuating market prices for municipalities and ultimately their customers.



SAFETY TIP: Only plug one heat-producing appliance into a receptacle outlet at a time (coffee maker, toaster, space heater, etc.). Major appliances such as refrigerators, ovens, air conditioners, washers and dryers should be plugged directly into a wall receptacle outlet (or dedicated circuit) – do not use extension cords or power strips.



Ohio Municipal League Legislative Bulletin

[OML HOME](#) • [Affiliates](#) • [Classifieds](#) • [Publications](#) • [About OML](#)

[Join the OML Legislative Bulletin E-Mail List](#)

[Committee Schedule](#)

September 25 , 2014

DEPARTMENT OF TAXATION NOTIFICATION CONFUSES MUNICIPALITIES

Earlier this week, the Department of Taxation sent to municipal Auditors, Finance Directors, Treasurers and Township Fiscal Officers a directive from the Tax Analysis Division requesting municipalities provide enhanced taxpayer revenue breakdowns. This contact from Columbus has some of our members puzzled.

The communication, which a copy can be found [HERE](#), cites the statutorily authorized annual survey the Department of Taxation conducts on Ohio cities and villages to collect data pertaining to municipal income, lodging and admissions taxes, for their annual report. What caught our attention and the attention of the nearly 600 municipalities that received the directive is the part of the letter that references sub.HB5, the municipal income tax reform bill. As our members will remember, the legislation has received two hearings in the Senate Finance Committee, and remains in that committee for further action once the General Assembly returns in mid November for the Lamé Duck session.

The passage reads, *“In accordance with Substitute House Bill 5, we’ve expanded this data collection to determine the breakdown between revenues generated by business and by individual or personal income. In addition, we’ve asked for clarification on joint economic development distributions. Specifically, the exact name of the agreement, with whom it is contracted with and the distribution amounts for each.”*

Sub. HB5 has not been passed and enacted by the Ohio General Assembly so we are a bit puzzled by the “in accordance” directive by Ohio’s State Tax Commissioner to compel Ohio cities and villages to provide this enhanced data collection information. Furthermore, there is no legislative language in the current version of sub.HB5 that would require municipalities to collect this information and provide it to the Ohio Department of Taxation.

We just want to make sure our members are aware of this issue and are familiar with the facts.

SUB.HB5 TECHNICAL ISSUES ADDRESSED

On Monday, a meeting was convened by Chairman Oelslager and Senator Peterson with representatives from municipalities along with tax reform coalition members to discuss areas of sub.HB5 that have been identified as strictly technical issues and discrepancies in the as passed by the House version of the bill.

In addition to the representatives from municipalities and the reform coalition, those present for the review included a representative from Governor Kasich’s office, the Department of Taxation, the Senate Majority Caucus

and Legislative Service Commission (LSC). The real purpose of the meeting was to go over the strictly technical errors that require corrective language and present the alternative, technical language to the LSC staff attorney who will be responsible for drafting the appropriate alternative language for the Senate to consider amending to the bill.

As part of the meeting, the significant policy issues which remain the focus of municipality's opposition towards sub.HB5, currently before the Senate Finance committee, were not addressed. There was no discussion of when a future meeting would occur before the legislature returns to legislative activity in November, to discuss these serious and potentially financially devastating "reforms" to Ohio's municipal income tax.



Update

A weekly newsletter presented by AMP President/CEO Marc Gerken

September 26, 2014

PJM posts results for the 2016-2017 First Incremental Capacity Auction

By Brandon Poddany – power supply planning engineer

PJM posted the results of the 2016-2017 First Incremental Capacity Auction (1IA) on Sept. 19, 2014. The auction cleared with four distinct pricing regions: PJM RTO, ATSI (First Energy), MAAC/Eastern PJM and PS/PS North.

The results were similar to the 2016-2017 Base Residual Auction (BRA) that took place in May of 2013. Unlike previous incremental auctions, the 2016-2017 1IA results did not show a consistent pattern between increases or decreases in clearing price relative to the BRA.

This auction had the unique feature of having clearing prices that increased, remained the same, and decreased versus the 2016-2017 BRA.

2016-2017 RPM AUCTION CLEARING PRICES (\$/KW-MO)

LDA*	Demand Response Product Type	Base Residual Auction	1st Incremental Auction	Difference
PJM RTO**	Limited	\$1.81	\$1.64	-\$0.17
PJM RTO	Extended	\$1.81	\$1.83	\$0.02
PJM RTO	Annual	\$1.81	\$1.83	\$0.02
MAAC/EAST PJM+	Limited	\$3.62	\$2.72	-\$0.91
MAAC/EAST PJM	Extended	\$3.62	\$3.62	\$0.00
MAAC/EAST PJM	Annual	\$3.62	\$3.62	\$0.00
ATSI (FirstEnergy)	Limited	\$2.87	\$2.87	\$0.00
ATSI	Extended	\$3.47	\$3.06	-\$0.42
ATSI	Annual	\$3.47	\$3.06	-\$0.42

*Locational Deliverability Area (LDA)

**PJM RTO LDA includes the following AMP member zones: AEP, Allegheny, Duke and Dayton

+MAAC/EAST PJM LDA includes the following AMP member zones: DEMEC, PENELEC, PPL and METED

Energy markets continue slow rise

By Mike Migliore – assistant vice president of power supply planning & transmission

Natural gas and electric markets rose on Thursday as contracts for October neared expiration. Natural gas storage levels continue to reduce the gap to last year and now stand 11.4 percent below last year.

October natural gas prices were up \$0.06/MMBtu from last week, closing yesterday at \$3.97/MMBtu. November gas will become the prompt month contract on Monday and currently sells for \$4.01/MMBtu. 2015 on-peak electric rates climbed once again and are \$0.55/MWh higher than last week with AD Hub now priced at \$46.25/MWh.

Early registration for conference ends Oct. 16

By Karen Ritchey – manager of communication programs

As a reminder, early registration for the 2014 AMP/OMEA Conference ends on Oct. 16. Registration information for the conference, held Oct. 27-30 at the Hilton Columbus at Easton in Columbus, is available on the home page of the [AMP website](#).

Room availability at the Hilton is limited, with some nights already sold out. Alternate hotels in the area are listed below. For more information regarding conference registration, please contact me at kritchey@amppartners.org or 614.540.0933.

- Courtyard by Marriott Easton**
 3900 Morse Crossing
 Columbus, OH 43219
 614.416.8000
 Rate: \$182/night
When making reservations, please use room block code: AMPC
- Hampton Inn & Suites Columbus Easton**
 4150 Stelzer Road
 Columbus, OH 43230
 614.473.9911
- Holiday Inn Express & Suites Columbus Easton**
 4899 Sunbury Road
 Columbus, OH 43230
 614.476.1100
- Residence Inn Columbus Easton**
 3999 Easton Loop W
 Columbus, OH 43219
 614.414.1000
 Rate: \$189/night
When making reservations, please use room block code: AMP



Fitch upgrades DEMEC rating to 'A' with stable outlook

Provided by DEMEC, Inc.

Fitch Ratings recently announced that it has upgraded the Delaware Municipal Electric Corporation's (DEMEC) credit rating from "A-" to "A" with a stable outlook.

In its report, Fitch stated the importance of continued stability in creditworthiness of project members: "The participants in general exhibit healthy cash flow, minimal leverage and satisfactory cash balances that offset sizeable general fund transfers and sufficiently support the project rating. The demonstrated stability of the participant's overall creditworthiness is reflected in the rating upgrade to 'A.'"

DEMEC President/CEO and AMP Board Member Patrick McCullar thanked DEMEC staff for their hard work in preparing information and the DEMEC Board for their strong support.

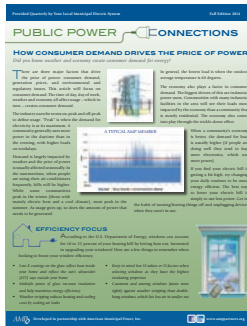
Fall edition of 'Public Power Connections' is now available

By Krista Selvage – manager of publications

The 2014 fall edition of *Public Power Connections* (PPC) was distributed earlier this week to AMP principal contacts and others who have requested it. In this edition are articles on how consumer demand drives the price of power, personal protective equipment, the process of contracting power, and efficiency and safety tips. Members who would like to be added to the PPC distribution list may contact me at 614.540.6407 or kbselvage@amppartners.org.

Feedback and suggestions are always welcomed.

For current and past editions of PPC, please visit the Member Extranet section of the [AMP website](http://www.ampwebsite.org).



How will you celebrate 2014 Public Power Week?

Public Power Week for 2014 is Oct. 5-11. In previous years, AMP member communities have celebrated Public Power Week through open houses, coloring/poster contests and presentations with local schools, luncheons, speakers, and distributing compact fluorescent light bulbs. We'd like to hear what you are doing this year in your community for Public Power Week. Please send information, including photos, to Krista Selvage at either 1111 Schrock Road, Suite 100, Columbus, OH 43229 or kbselvage@amppartners.org. For more information on Public Power Week, visit www.publicpower.org.

On Peak (16 hour) prices into AEP/Dayton Hub

Week ending Sept. 26

MON	TUE	WED	THU	FRI
\$38.31	\$38.06	\$35.88	\$38.37	\$40.46

Week ending Sept. 19

MON	TUE	WED	THU	FRI
\$36.08	\$35.24	\$37.19	\$37.14	\$34.24

AEP/Dayton 2015 5x16 price as of Sept. 26 — \$46.25

AEP/Dayton 2015 5x16 price as of Sept. 19 — \$45.70

AFEC weekly update

By Mike Migliore

The Fremont plant saw another week of on-peak only operation. Due to low market prices, the plant was scheduled offline by PJM on Friday, Saturday and Sunday.

On Monday through Thursday, the plant operated about 18 hours per day with off-peak shutdowns due to economics. Duct burners were not used during the seven-day period. The plant ended the week with a capacity factor of 29 percent (based on a plant rating of 675 MW).

AMP to host OTCO workshop in Bowling Green

By Michelle Palmer – assistant vice president of technical services

Water and wastewater license holders are invited to earn contact hours in an AMP-hosted workshop by the Operator Training Committee of Ohio (OTCO) from 8 a.m. to 3 p.m. on Oct. 10 at Simpson Building Garden Park in Bowling Green.



Open to AMP community members only, this workshop will be led by Mike Maringer, manager of municipal development with Quasar Energy Group.

Topics will include understanding nitrification, water/wastewater emerging technologies, water reclamation, chlorine chemistry and safety, lime softening, and updating a wellhead protection plan.

Cost is \$85 per person for the workshop (lunch included). Registration is requested by Oct. 3 to ensure an accurate lunch count. For more information or to register, please contact Sandi Sherwood, senior safety/OSHA compliance coordinator, at ssherwood@amppartners.org or 614.203.0351.

AMP holds Lineworker Advanced course Sept. 22-26

By Bob Rumbaugh – manager of technical training

Twelve experienced lineworkers and fourth-year apprentices from nine member communities in three states refreshed and enhanced their skills with AMP's Lineworker Training Advanced course from Sept. 22-26 at AMP headquarters.

The final course in AMP's Lineworker Series, the Advanced class delves into installation skills, simulated energized work and simulated hot stick work. The course is designed to provide an advanced knowledge of trouble investigation, crew leadership, communications and automation.

For more information on AMP's Lineworker Series, please contact Jennifer Flockerzie at jflockerzie@amppartners.org or 614.540.0853.



Participants of the Lineworker Training Advanced class are (from left): row one-Bob Rumbaugh, class instructor; Josh Wright, New Martinsville; Mike Behary, Lodi; Jonathan "Chris" Hamilton, Yellow Springs; Erik Geodecke, Cuyahoga Falls; Blake Caporaletti, Cuyahoga Falls; Bruce Follweiler, class instructor; Jason Kratochvil, Zelenople; Row two-Gary Shultz, class instructor; Ben DeGraw, Hudson; Mark Reed, Jackson Center; Robert Reddick, Hudson; John Most, Orrville; Jesse Brubaker, Orrville; and Travis Walls, Wapakoneta.

LED streetlights improve driver safety

By Tim Stearns – Efficiency Smart senior energy consultant and author of "A Guide to LED Municipal Street Lighting Upgrades"

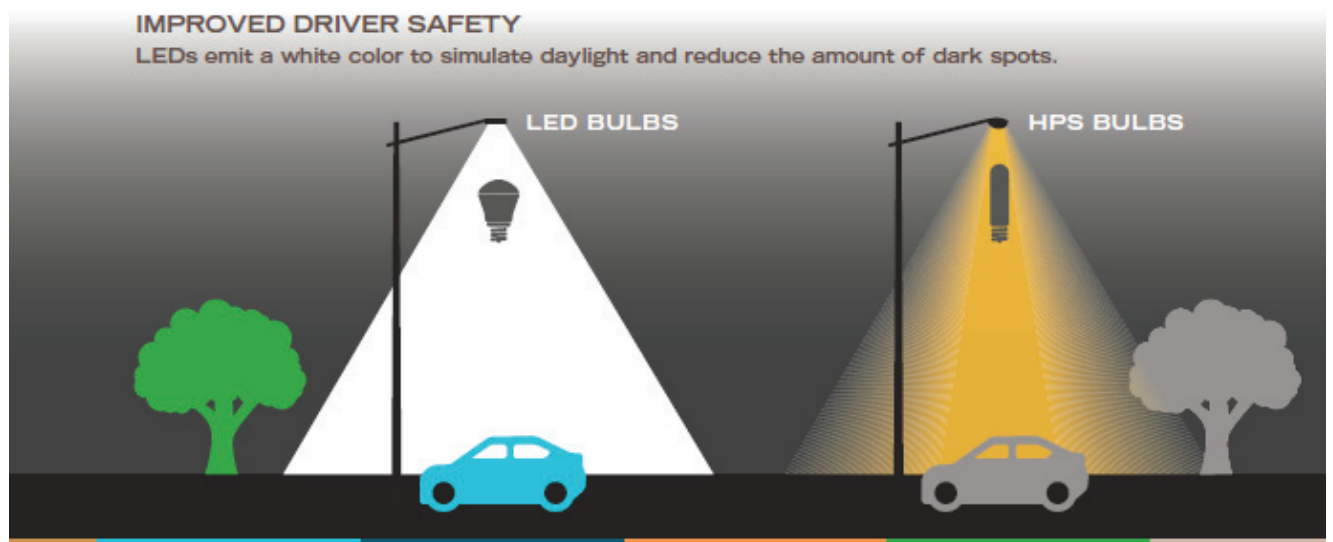
Light-emitting diode (LED) streetlights, compared to common municipal street lighting options such as high pressure sodium (HPS) fixtures, offer many advantages over traditional types of streetlights beyond saving energy and reducing costs. One such advantage of LED streetlights is improved driver safety.

LEDs offer a desirable color temperature – the color of light measured in degrees Kelvin (K), which relates to the quality of light from a source. Traditional HPS lights have a color temperature of approximately 2,200K, which results in a yellowish light as illustrated below. This can create a warm and sleepy feeling for drivers, which is an undesirable quality on a roadway. Alternatively, LEDs for street lighting applications are designed to emit a cool

white (4,100K) or daylight white (5,000K) color, which simulates a daylight feeling and can keep drivers more alert. The directional nature of LEDs also allows for an even light distribution, resulting in a lower number of dark spots than would be experienced with traditional streetlights.

Copies of "A Guide to LED Municipal Street Lighting Upgrades" will be available for all AMP member communities at the 2014 AMP/OMEA Conference in October. The guide will also be available for download from Efficiency Smart's [website](#) by the end of October. To pre-order a copy for pickup at the AMP/OMEA Conference, please contact Carrie Hoover at choover@efficiencysmart.org or 614.468.4916 by Oct. 15.

This article is part one of a three-part series on municipal streetlights



Wapakoneta accepts resumes for groundworker position

The City of Wapakoneta is accepting resumes for the full-time position of Groundworker.

Please visit www.wapakoneta.net for additional details and application.

Resume and application should be mailed to: Donald Schnarre, Electric Superintendent, City of Wapakoneta, P.O. Box 269, Wapakoneta, OH 45895. Deadline is 3 p.m. on Oct. 31, 2014.

Waynesfield accepts water-wastewater treatment plant operator applications

The Village of Waynesfield is currently seeking applicants for water/wastewater treatment plant operator.

Desirable candidate must possess a high school diploma or equivalent, a valid Ohio Commercial Driver's License Class B endorsement or higher (class A preferred), and Ohio Class I Operator Water Supply License and/or Ohio Class I Operator Wastewater Works License. Operator in training certificates may be considered.

Applicants must be able to pass a background check and drug-screen.

Under direct supervision of the Village Administrator, will be responsible for the operation of the Water Treatment Plant and the Wastewater Treatment Plant and also work in other departments as needed or required; must be willing to work in adverse weather conditions, after hours, weekends and on-call.

Prior experience in plumbing, electrical, pumps and motor controls is preferred. The village has its own distribution system. Any experience in high voltage line work is desired.

Pay scale for this position is \$11.50 - \$18.50/hr. Please submit resumes and copies of EPA licenses no later than 3 p.m. Oct. 3, 2014 to: Village of Waynesfield, Attn: Village Administrator, P.O. Box 128, Waynesfield, OH 45896; or email to vowfiscoff@bright.net.

Applications can be picked up at the Municipal Building between 8 a.m. and 3 p.m. at 300 N. Westminster St., Waynesfield, OH 45896. For questions, please call Fred Rowe at 419.780.5000.

Village of Bradner in need of electrical lineworker candidates

The Village of Bradner is accepting applications for a qualified fulltime electrical lineworker position. Candidates must possess a high school diploma, five years of general electrical utilities experience, distribution lines, and substations, as well as the ability to respond to necessary field work on a daily and emergency basis. Water and waste water experience is preferred, but not necessary.

Candidate must be willing to obtain these licenses if not currently held. A valid driver's license is required. A Class A CDL with air brake endorsement is required or must be obtained within six months of hire. This position will report to the Utility Superintendent.

Salary commensurate with experience plus an excellent benefit package. Applications and complete job description can be obtained at the village offices, located at 130 N. Main St., Bradner, OH 43406 or by contacting the fiscal officer at 419.288.2890. The Village of Bradner is an Equal Opportunity Employer.

St. Clairsville seeks lineworkers

The City of St. Clairsville has openings on its electric distribution crew for two lineworkers. The rate of pay depends on the candidate's education and/or experience. A Second Class or higher is the required level of knowledge, skills and abilities. The Civil Service Commission will review applicants and qualify them for interviews. A complete job description is available at www.stclairsville.com.

Resumes should be mailed to: Director of Public Services, City of St. Clairsville, P.O. Box 537, St. Clairsville, OH 43950 or emailed to nedgar@stclairsville.com. Deadline is 3 p.m. Sept. 30, 2014.

Danville Utilities Department has two positions available

The City of Danville Utilities Department is seeking candidates for two positions. For more information and to apply online, please visit www.danville-va.gov. Both positions will remain open until filled. Equal Opportunity Employer.

Electric Substation Superintendent: An experienced candidate is needed to perform administrative and expert technical support for the Substation and Meter department as well coordinating the dispatch/control of power supply. Ability to read, understand, and interpret financial reports and/or legal documents is required. Qualified candidates must have broad knowledge in a general professional or technical field or a bachelor's degree in related field. Possession of valid driver's license is required. Starting salary range: \$56,993 - \$68,391/annual.

Key Accounts Manager: A qualified professional is needed to manage major accounts, administer energy efficiency programs; coordinate customer information and education activities, promote service offerings, and participate in budgetary, accounting, and utility rate computations. Education and experience equivalent to a bachelor's degree in engineering, business marketing, or other related field and extensive experience preferred in marketing, business retention, economic development or utility industry experience with large customers. Compensation pay range: \$51,345.00 - \$61,614.00/ DOQ.

